

PC 17 Linear System

Ref: DS036

Cleanroom partition panel comprised of:

- > One external Coated Steel Sheet with various surface finishes.
- > Bonded to a 16mm Aluminium Honeycomb Core.
- > Coated Steel sheet wraparound the plasterboard core on all four edges.
- > Extruded Aluminium Interlocking Edge Profile to bottom, top & sides to allow panels to interlock flush when installed.
- > Double Supporting L-Angle installation brackets installed to existing wall substrate, the double angle allows panels to be installed plumb onto an uneven wall.

Panel Characteristics & Performance

- > Panel Thickness: 17.5mm
- > Thickness of coated steel outer face: 0.6mm
- > Weight: 11kg/m²
- > Fire Classification: A2-s1-d0
- > Panel Width: 1200mm
- > Maximum Panel Height: 3000mm
- > Maximum weight for items fixed to partition 15kg

Panel Finish Options

Panel Surface Finish Options

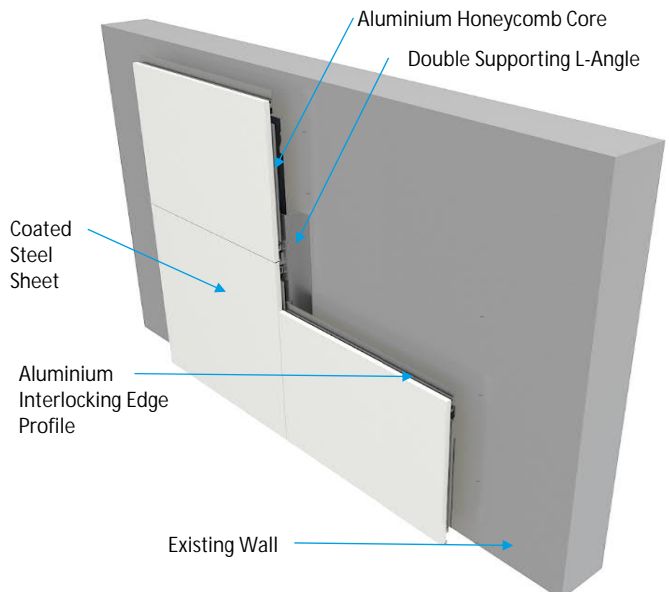
- > PET Coated Steel Substrate to RAL 9010 White (TATA Advantica CL Clean) (for silicone joints)
- > uPVC Coated Steel Substrate to RAL 9010 White (TATA Advantica L Control) (for cold weld and silicone joints)

For other finishes please contact us

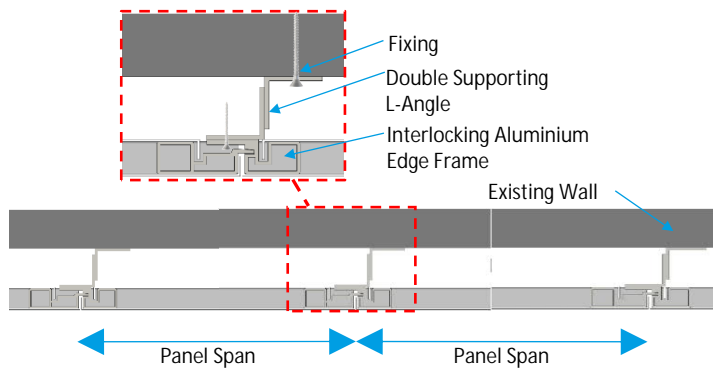
Panel Options

Panel Core Options

- > Type 1 Aluminium Interlocking Edge Profile To Sides Only.
- > Type 2 Aluminium Interlocking Edge Profile To Sides, Top & Bottom.



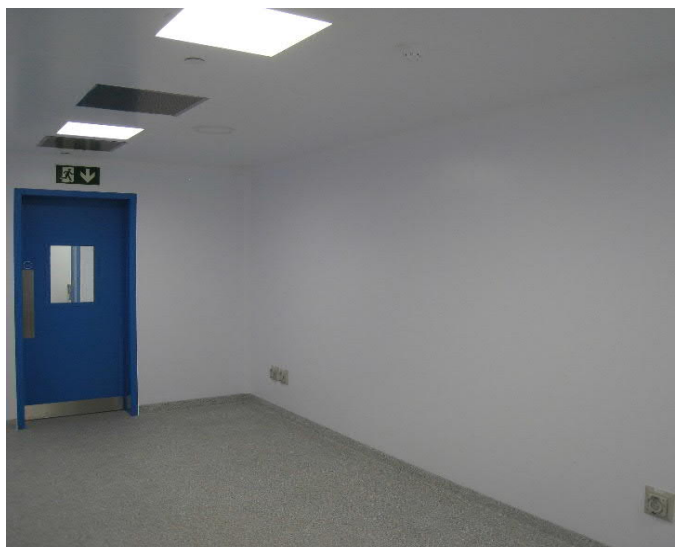
3D View



Plan Section View

Packaging

Panels stacked on a wooden pallet max 30 panels high. Max pallet height: 1500mm, Max pallet width: 1280mm. Max pallet length: 2900mm, Protection to the vertical & horizontal corners of the stack. ISPM 15 certified crafting available on request for US market.



Ordering Options

Type 1 Aluminium Interlocking Edge Profile To Sides Only

Panel Size	Panel Finish	PET (RAL9010)	uPVC (RAL9016)			
Order Code						
1200 x 2990		PS_PC17_PET-1200-2990-T1	PS_PC17_PVC-1200-2990-T1			
1200 x 2890		PS_PC17_PET-1200-2890-T1	PS_PC17_PVC-1200-2890-T1			
1200 x 2490		PS_PC17_PET-1200-2490-T1	PS_PC17_PVC-1200-2490-T1			
1200 x 2390		PS_PC17_PET-1200-2390-T1	PS_PC17_PVC-1200-2390-T1			
Type 2 Aluminium Interlocking Edge Profile To Sides, Top & Bottom						
Panel Size	Panel Finish	PET (RAL9010)	uPVC (RAL 9016)			
Order Code						
1200 x 2990		PS_PC17_PET-1200-2990-T2	PS_PC17_PVC-1200-2990-T2			
1200 x 2890		PS_PC17_PET-1200-2890-T2	PS_PC17_PVC-1200-2890-T2			
1200 x 2490		PS_PC17_PET-1200-2490-T2	PS_PC17_PVC-1200-2490-T2			
1200 x 2390		PS_PC17_PET-1200-2390-T2	PS_PC17_PVC-1200-2390-T2			

Note: For non standard panel size please contact us.

Note: Fixings, Adhesive, Corner Coving & Sealant Sold Separately.

All information provided in this document is subject to legal disclaimers. It is the sole responsibility of the purchaser to determine the suitability of materials, products and components, in order to ensure that the final end-use product is safe for its end use; performs or functions as intended; and complies with all applicable legal and regulatory requirements.

CLEANROOM.net LTD
The Prince, Castlecomer,
Co. Kilkenny, R59 X8ER, Republic Of Ireland.

Tel: +353-56-449-1491
Email: Info@cleanroom.net
Web: www.cleanroom.net