

PC 10 Liner System

Ref: DS034

Cleanroom partition panel comprised of:

- > One external Coated Steel Sheet with various surface finishes wraparound edges of panel to four sides.
- > Bonded to a 9mm thick Aluminium Honeycomb Core.
- > Internal standard coated backer sheet.
- > Panel to be bonded to existing wall using Liner Panel Adhesive (Recommended Product Soudal Fixall Turbo).
- > Panel to be installed 100mm above finished floor level (using a temporary 10x20mm steel angle to support weight while adhesive cures) to create a recessed base for flush flooring installation.

Panel Characteristics & Performance

- > Panel Thickness: 10mm
- > Thickness of coated steel outer face: 0.6mm
- > Weight: 8.7kg/m²
- > Fire Classification: A2-s1-d0
- > Panel Width: 1200mm
- > Maximum Panel Height: 3000mm
- > Maximum weight for items fixed to partition 15kg

Panel Finish Options

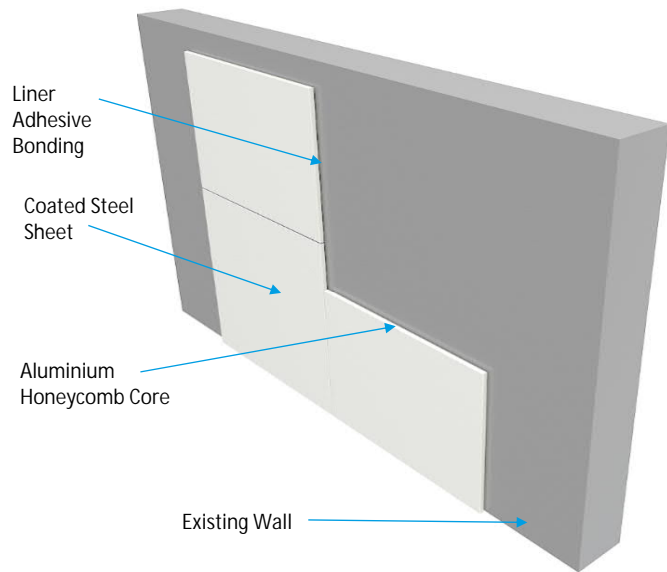
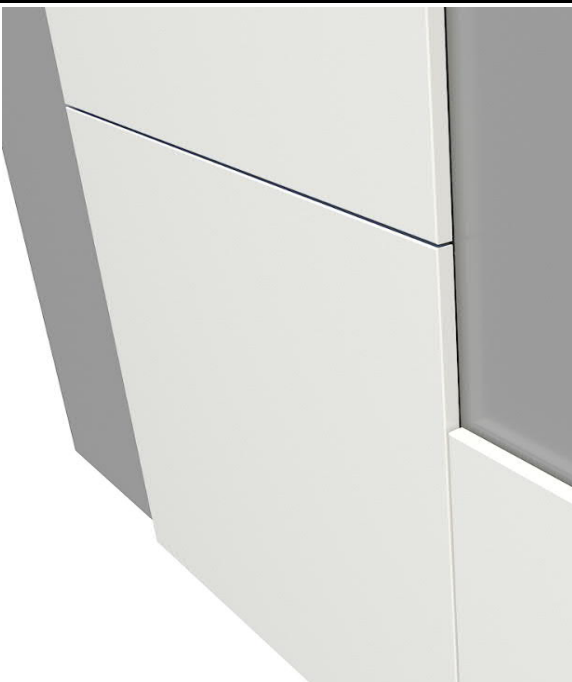
Panel Surface Finish Options

- > PET Coated Steel Substrate to RAL 9010 White (TATA Advantica CL Clean) (for silicone joints)
- > uPVC Coated Steel Substrate to RAL 9010 White (TATA Advantica L Control) (for cold weld and silicone joints)

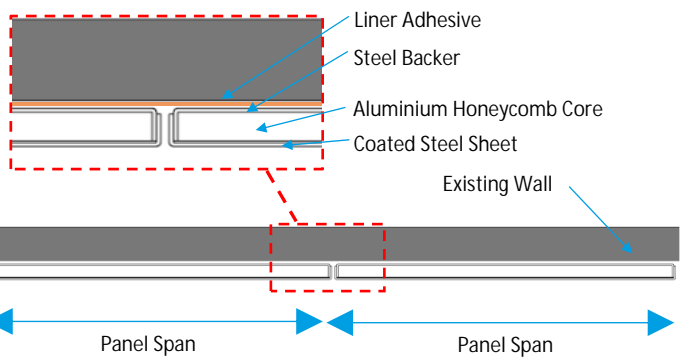
For other finishes please contact us

Recommended Adhesive Options

- > Soudal Fixall Turbo
- > Everbuild Stixall Extreme Power
- > SikaTack Panel
- > SikaTack Panel Fixing Tape (one vertical strip every 100mm)



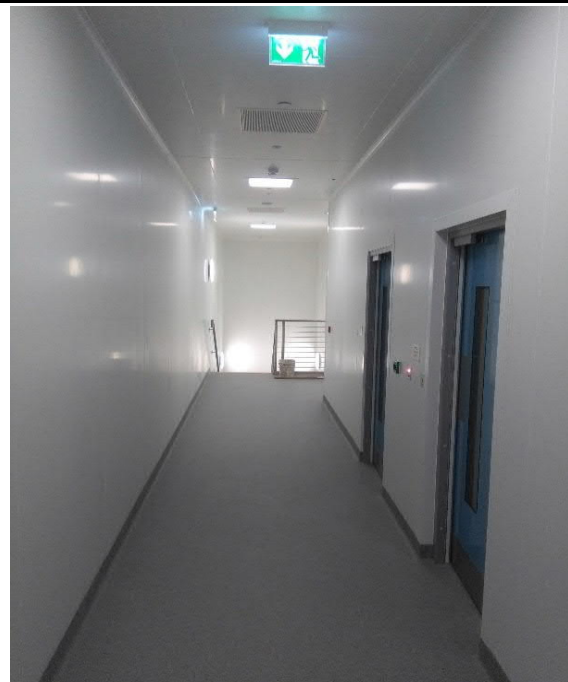
3D View



Plan Section View

Packaging

Panels stacked on a wooden pallet max 30 panels high. Max pallet height: 1500mm, Max pallet width: 1280mm. Max pallet length: 2900mm, Protection to the vertical & horizontal corners of the stack. ISPM 15 certified crafting available on request for US market.



Ordering Options

Panel Size	Panel Finish	PET (RAL9010)	uPVC (RAL9016)				
		Order Code					
1200 x 2990		PS_PC10_PET-1200-2990		PS_PC10_PVC-1200-2990			
1200 x 2890		PS_PC10_PET-1200-2890		PS_PC10_PVC-1200-2890			
1200 x 2490		PS_PC10_PET-1200-2490		PS_PC10_PVC-1200-2490			
1200 x 2390		PS_PC10_PET-1200-2390		PS_PC10_PVC-1200-2390			

Note: For non standard panel size please contact us.

Note: Fixings, Adhesive, Corner Coving & Sealant Sold Separately.

All information provided in this document is subject to legal disclaimers. It is the sole responsibility of the purchaser to determine the suitability of materials, products and components, in order to ensure that the final end-use product is safe for its end use; performs or functions as intended; and complies with all applicable legal and regulatory requirements.

CLEANROOM.net LTD
The Prince, Castlecomer,
Co. Kilkenny, R59 X8ER, Republic Of Ireland.

Tel: +353-56-449-1491
Email: Info@cleanroom.net
Web: www.cleanroom.net